



# Dremio Cloud for Azure

The Easy and Open Data Lakehouse

# Introducing...Dremio Cloud in Azure

Eliminates the pain of managing infrastructure



## Dremio Cloud

Split Plane architecture, control plane hosted by Dremio, execution hosted in customer tenant.

### Cloud Features

- Next Generation Architecture
- Zero Downtime Upgrades
- Zero Setup & Management Overhead
- Consumption Pricing
- Latest Functionality
- Quickest Time to Value



# Importance of Dremio for Azure

Hanno Borns

# Data architecture paradigms in the cloud



Top-down approach  
Schema on Write  
Upfront transformation  
Structured data  
Higher TCO



Hybrid approach - Data Warehouse +  
Data Lake + Governance  
Structured, semi and unstructured data,  
delta lake  
ACID transactions  
Time travel



Bottoms-up approach  
Schema on Read  
Expedite access to data  
Semi-structured and unstructured data  
Explore data to identify value



Decentralized Ownership  
Domain Data  
Data as a Product  
Cross-functional Domain Data Teams  
Ecosystem of Data Products

# Empower data driven digital economy with Data Lake Storage



Scalable, durable, available



Secure and compliant



Cost Effective



Comprehensive data management



Foundational for demanding workloads

# Blob and Data Lake Storage key use cases



Machine Learning/AI



Analytics / Power BI



HPC



BCDR



Cloud-Native Apps

# Extensive partner ecosystem

Primary and  
Secondary Storage



panzura



Analytics



dremio unravel



StreamSets databricks



ELEMENTAL TO BIG DATA



Backup, Archive  
and DR

COMMAVAULT



veeam

VERITAS

Zerto

DELL EMC

Data Management



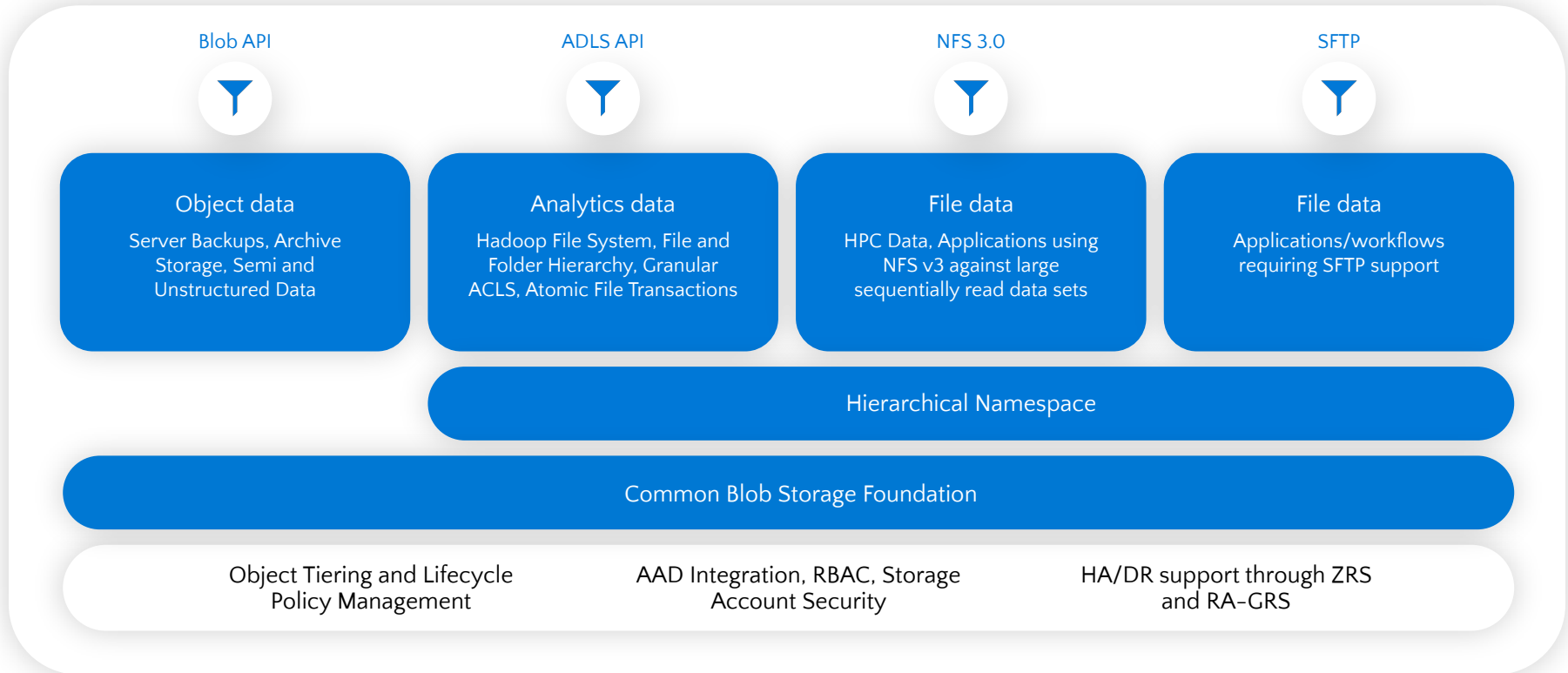
Powered by Innovation



Container  
Management




# No Data Silos – Multi-protocol, single storage platform





# Leading the Present and Future of Data Analytics



**2010 – 2015**

**Data Lake**


- Fixed compute & storage capacity
- Mostly on-prem
- Harder to use & manage



**2022-...**

**Data Lakehouse**

- Data in open file and table formats
- No need to copy & move data
- Multiple best-of-breed processing engines



**1980 – 2010**

**Enterprise Data Warehouse**


- Fixed compute & storage capacity
- Mostly on-prem
- Harder to use & manage



**2015 – 2023**

**Cloud Data Warehouse**

- Scale storage and compute independently
- Must load data into proprietary system
- Limited to one processing engine
- Cost prohibitive

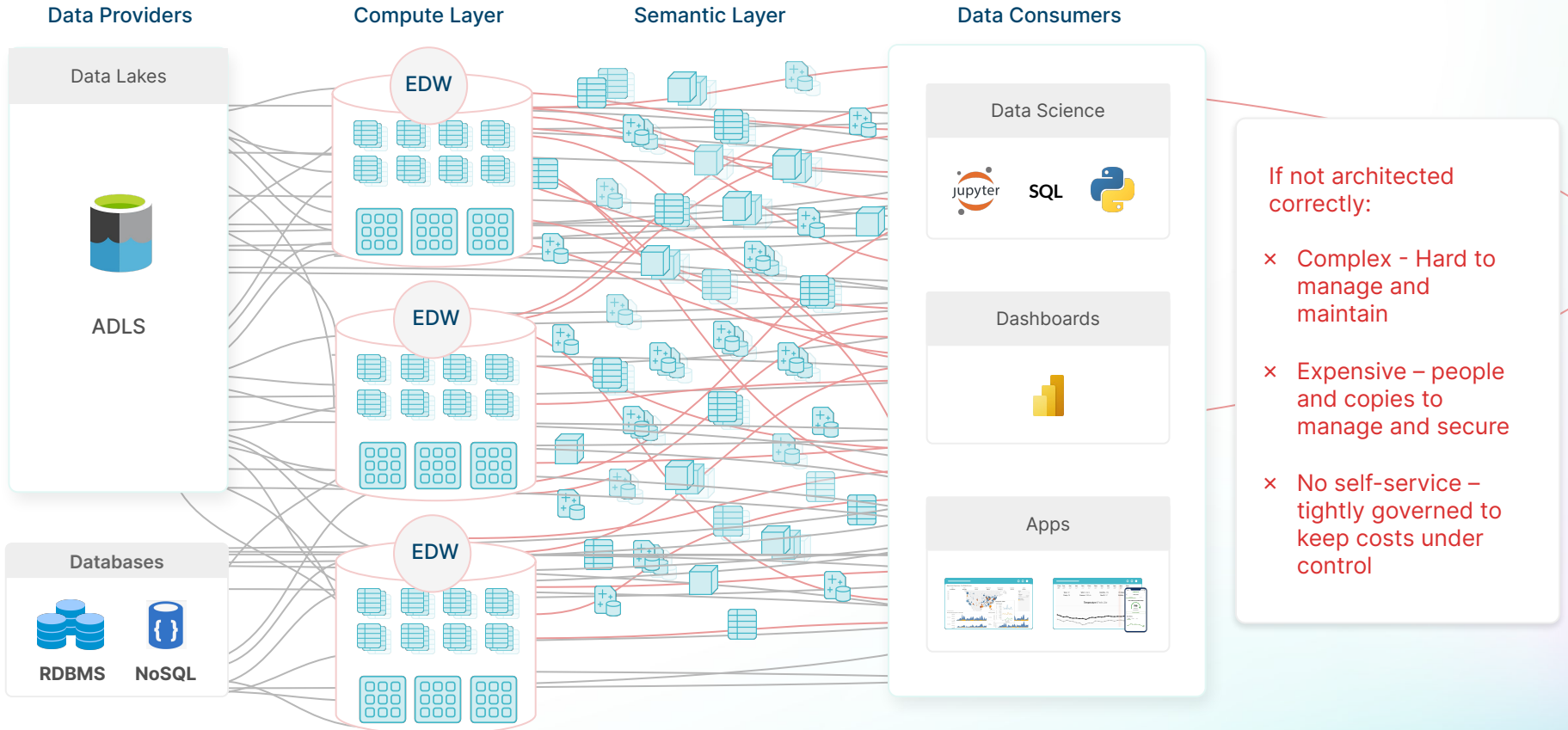


**2023-...**

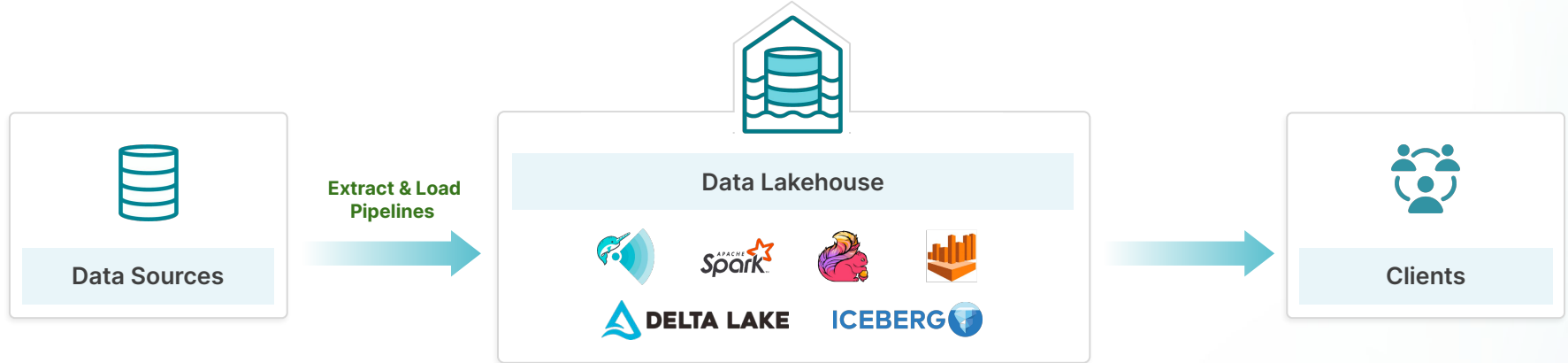
**Data Lakehouse 2.0/Data Mesh**

- Autonomous (AI) semantic layer
- Data as Code (i.e., GitHub for Data)

# Traditional Analytics Architecture



# Enterprises are Moving to a Lakehouse to Simplify



## ETL Changes

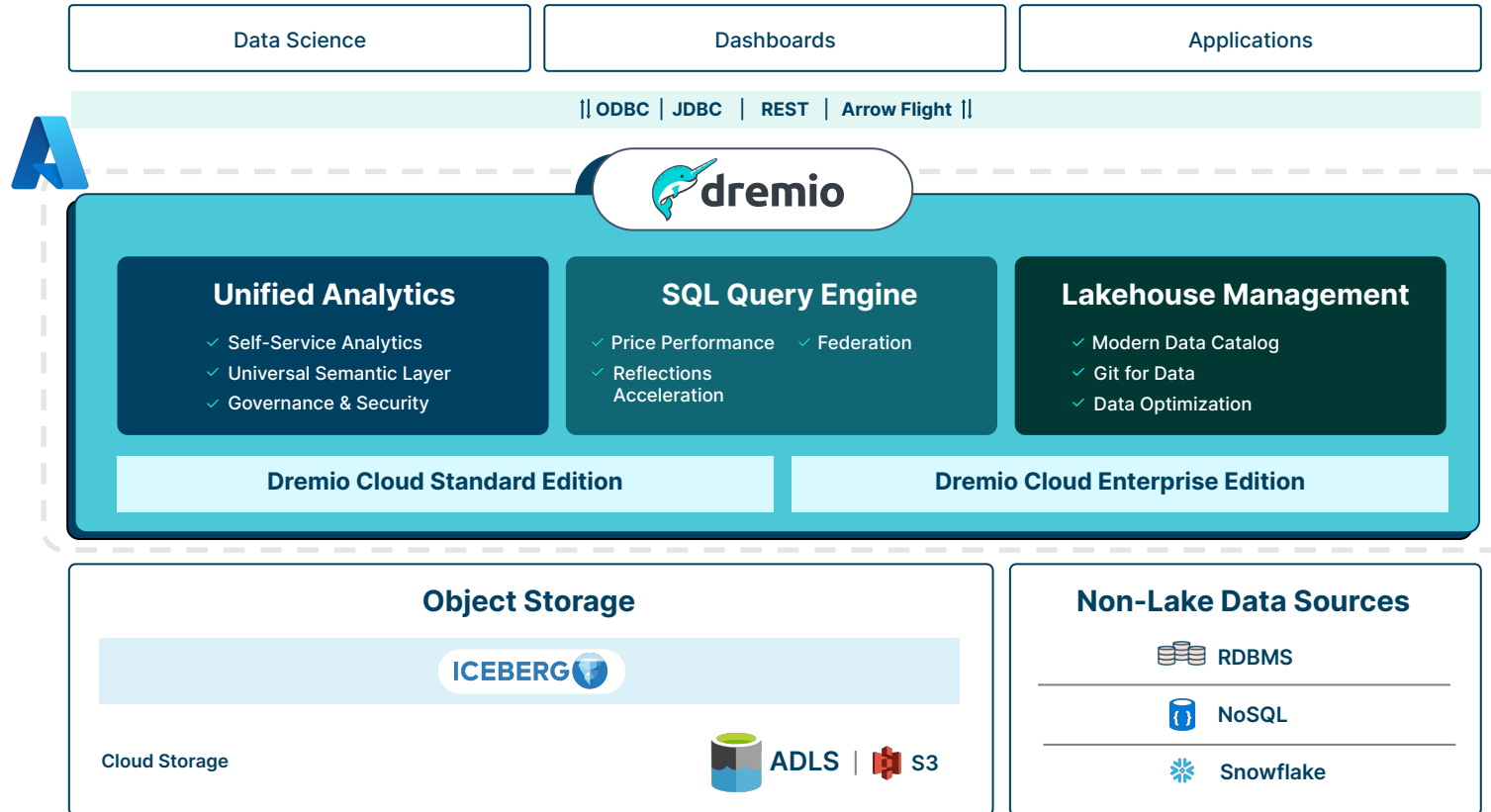
- Reduce complex transform pipelines in Java / Scala / Python (e.g., Spark)
- Move to SQL-based ETL (DBT)
- Full transform lifecycle lives in the lake



## Lakehouse Advantages

- Open data and table formats
- Storage / compute separated, elastic SQL engine
- No Copy Architecture
- Full ACID Transactions, Time-Travel, Schema / Partitioning Evolution
- **Compelling Economics**

# The Unified Lakehouse Platform for Self-Service Analytics



# Shifting Left Reduces MTTI and Shortens ETL Pipelines



Shifting left requires three core pieces of innovation

**Intuitive self-service experience**

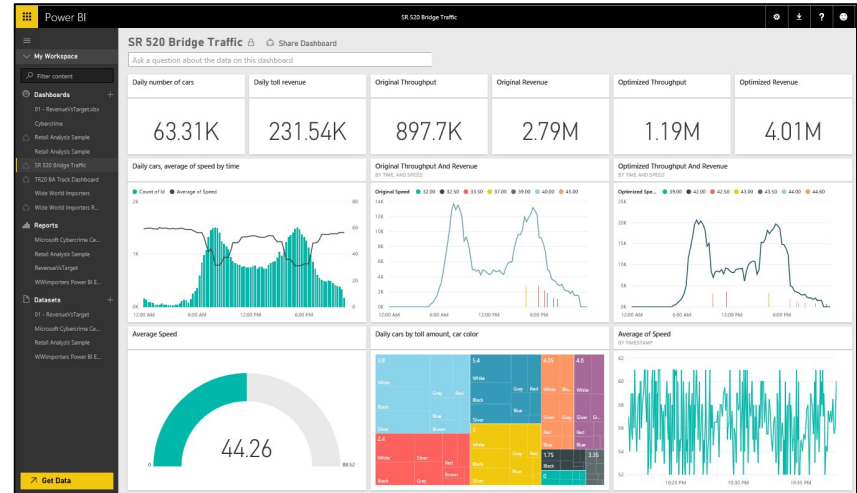
**An intelligent query engine**

**Next-generation dataops capabilities**

# Experience data with Microsoft Power BI

Dremio is the glue between your data and its use

- Experience your data. Any data, any way, anywhere.
- Power BI is a cloud-based business analytics service that enables:
  - Fast and easy access to data
  - A live 360° view of the business
  - Data discovery and exploration
  - Insights from any device
  - Collaboration across the organization
  - Anyone to visualize and analyze data



# Introducing Microsoft Power BI

## Key benefits and differentiators



Pre-built content packs, consisting of dashboards and reports, for popular SaaS solutions



Real-time dashboard updates with Direct Query



Secure connection to your data sources, on-premises and in the cloud



Intuitive data exploration by using natural language query



Integration with familiar Microsoft products enabling end-to-end AAD SSO with Dremio Cloud



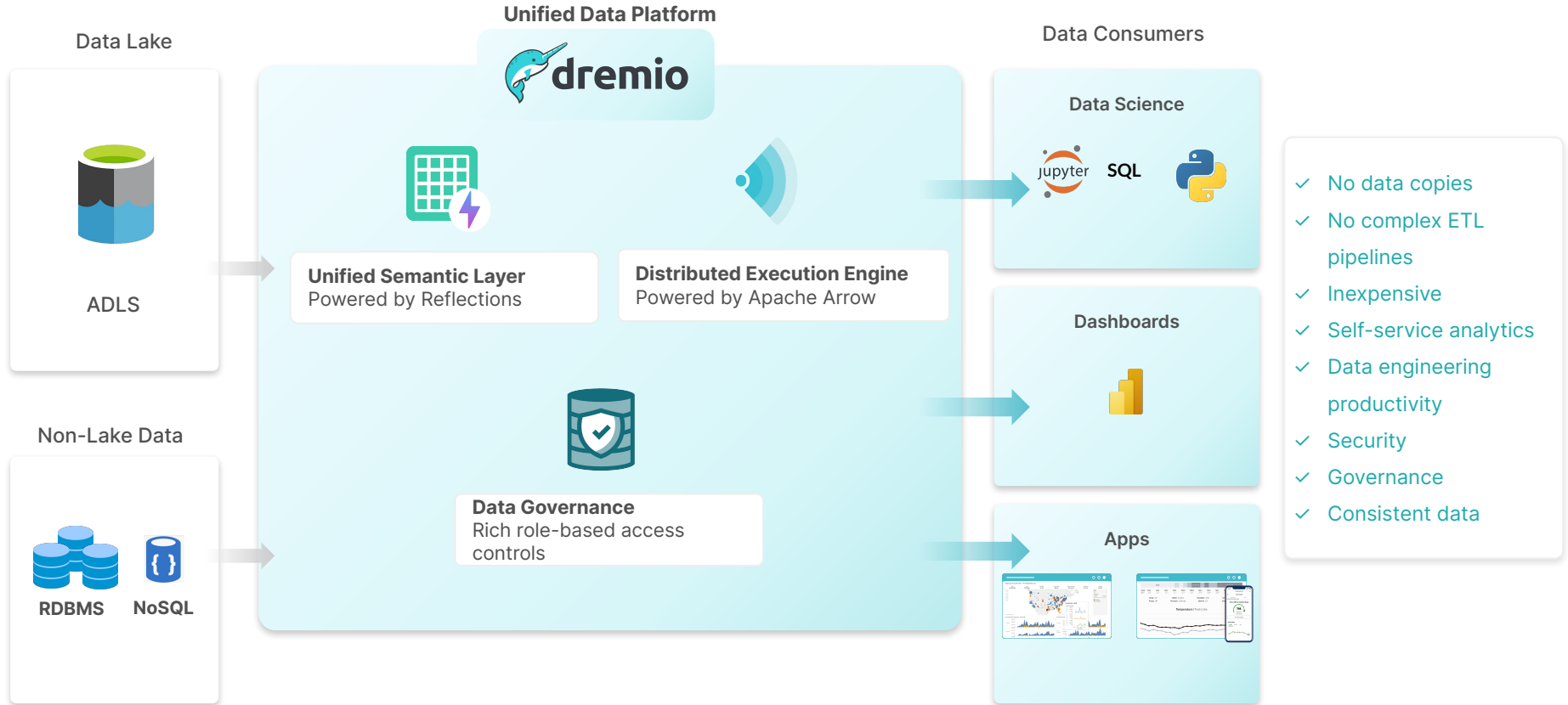
Fast deployment, hybrid configuration, secure, and integrated with existing IT systems



# Demo



# Data Lakehouse on Azure with Dremio Cloud



**Thank you!**