

GNARLY
Data_Waves

PRESENTED BY  **dremio**

EPISODE 13

Making the Move: Five Factors to Consider When Migrating from Hadoop to the Data Lakehouse

Today's Agenda

Making the Move: Five
Factors to Consider
When Migrating from
Hadoop to the Data
Lakehouse

- Why Migrate off Hadoop
- Introduction to the Dremio Lakehouse
- 5 Factors to Consider When Migrating Hadoop to the Data Lakehouse

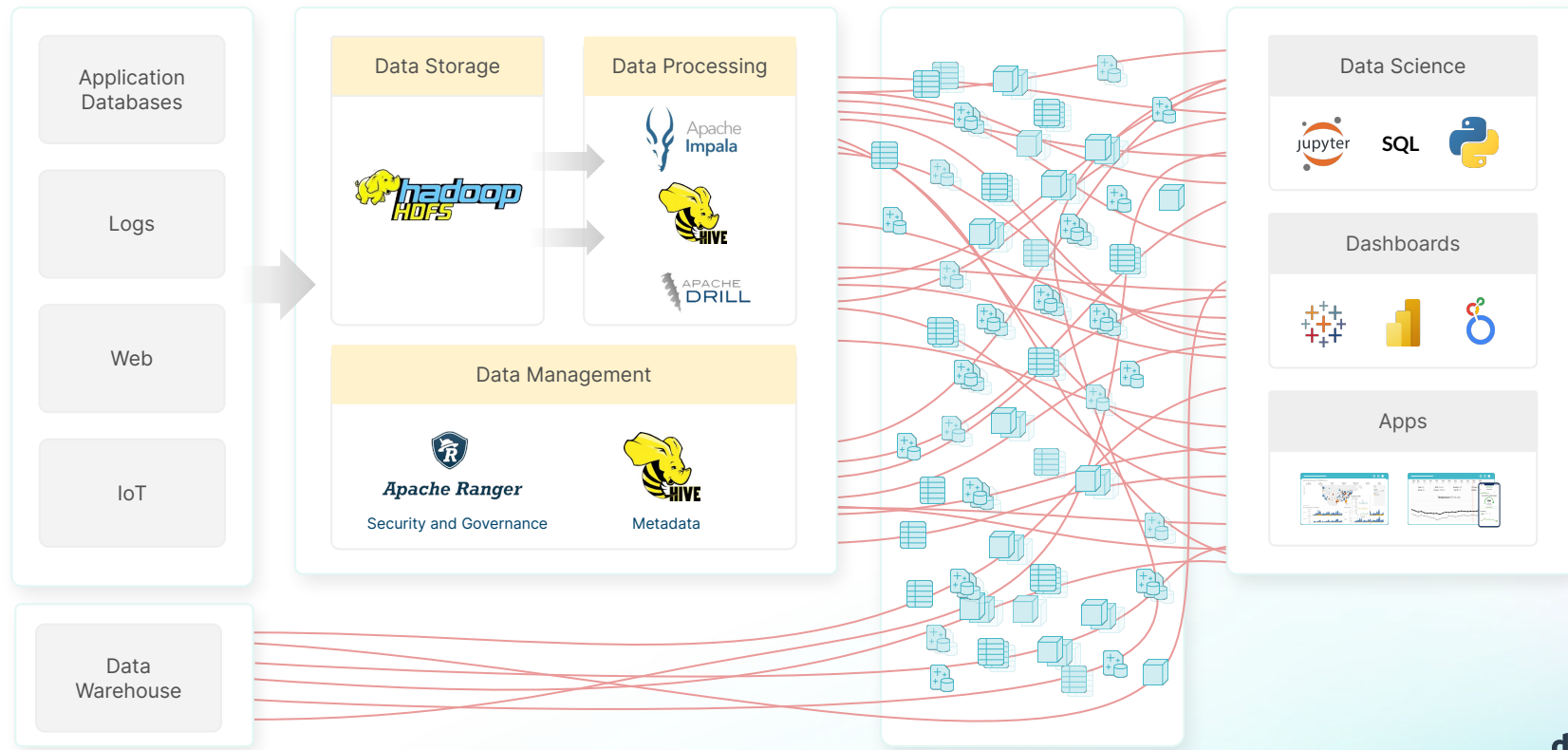


The Hadoop Ecosystem

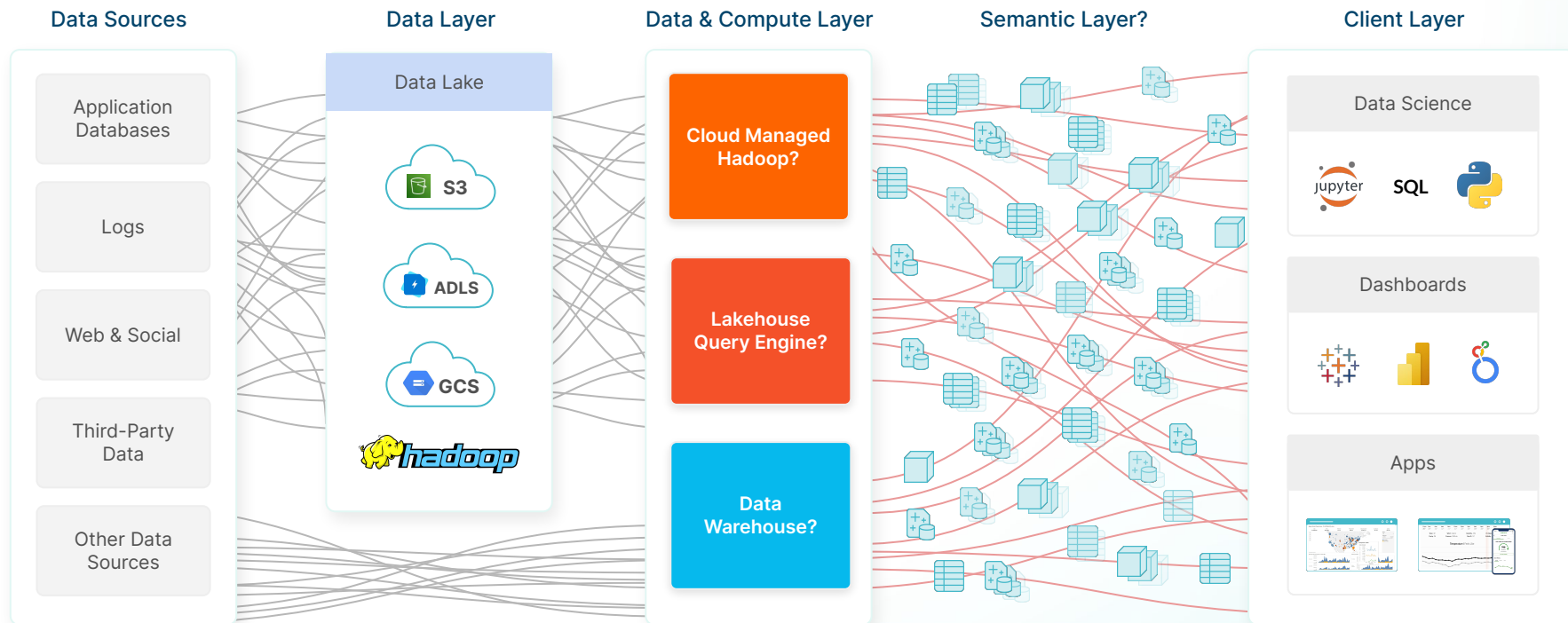
Challenges

- ✓ Requires deep expertise in the Hadoop ecosystem to maintain
- ✓ High cost of scalability as your data grows
- ✓ Query performance management
- ✓ Difficult to enable governed self-service analytics

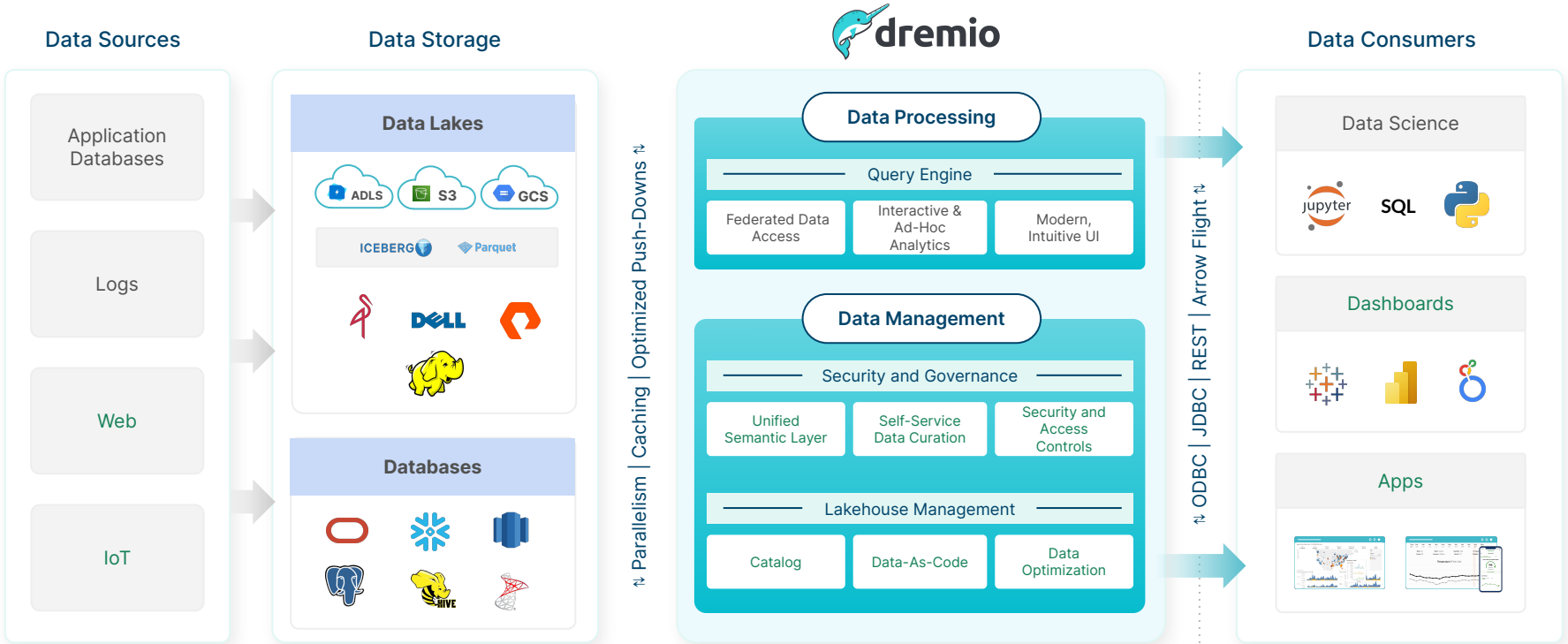
Continuous New Data



What are your options?



Dremio Data Lakehouse



#1 - Digital and AI Transformation



Supply Chain Optimization

- Identify and resolve supply chain issues
- Increase market share and profitability



Customer 360

- Drive insights before insurance policies lapses
- Understand patient history and identify interactions with their network faster



Simplify IT Efficiency

- Consolidate data and analytics platform
- Provide customers easy access and integrations to data and tooling

Who We've Helped



Memorial Sloan Kettering
Cancer Center

Creating a purposeful scientific data management system that accelerates cancer research for scientists



Mapping customer experience to identify bottlenecks in order processing to consistently meets delivery commitments

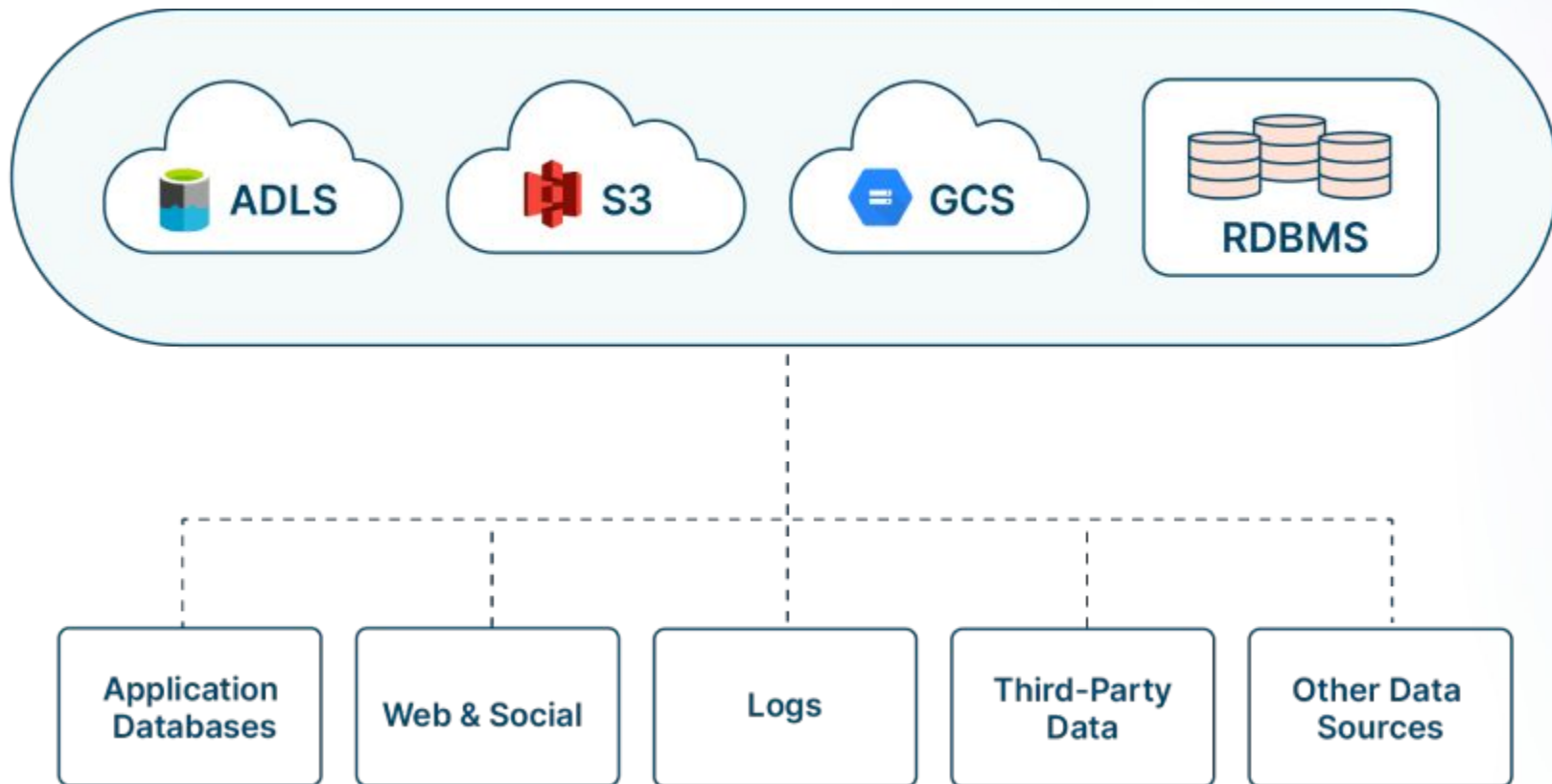


Building products for financial inclusion and promote economic opportunity

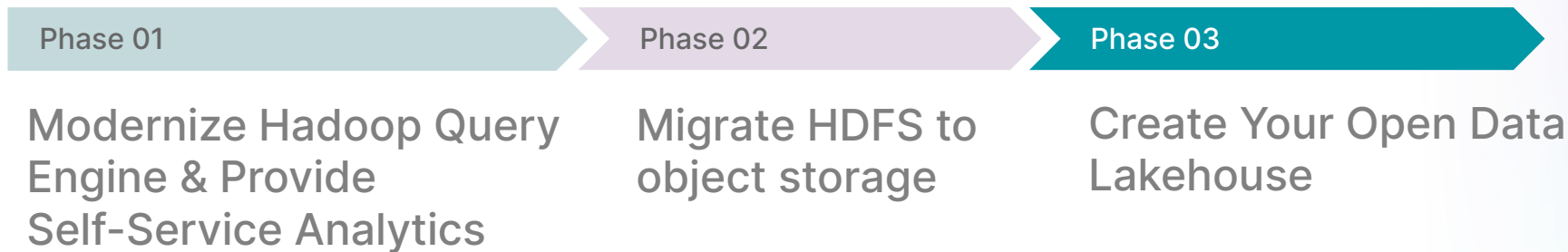
"Dremio is literally going to help MSK save the lives of cancer patients."

Arfath Pasha, Lead Software Engineer at Memorial Sloan Kettering Cancer Center

#2 - Data Estate Vision



#3 - Hadoop Migration Plan



Accelerate value and transform your business in weeks, not years

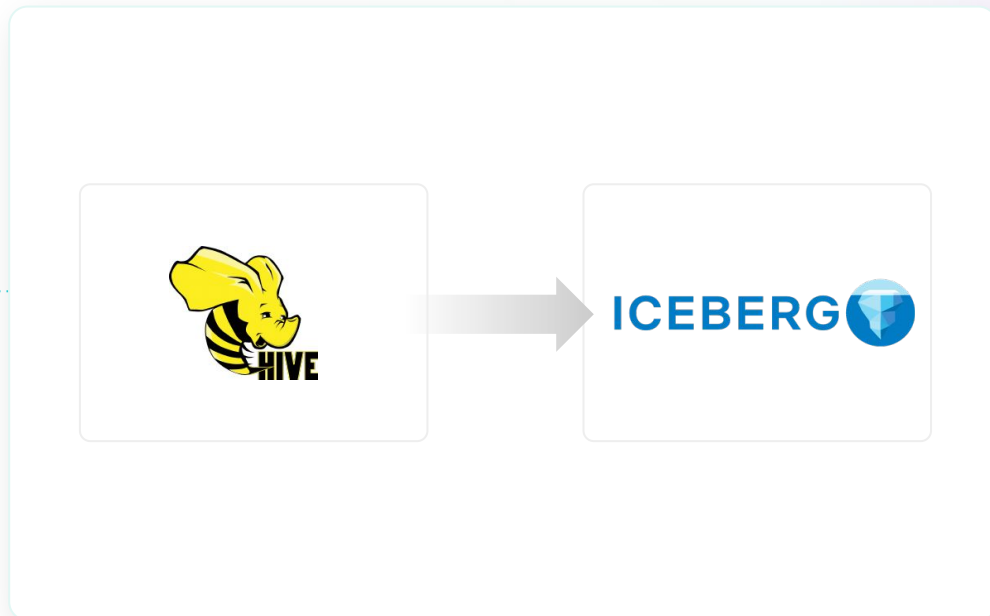
#4 - Open Data

What happens?

- ✓ Data is in cloud object storage
- ✓ Migrate Hive tables to open table format like Apache Iceberg

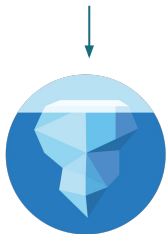
Results:

- ✓ Future proof your data architecture
- ✓ Achieve higher performance, DDL, DML, schema evolution, time-travel, and other data warehouse functionality
- ✓ Avoid vendor lock-in from proprietary table formats
- ✓ Make data accessible to your query engine(s)



Open Data Lakehouse with Dremio

Community-Built



Apache Iceberg

- ACID Transactions
- Partition Evolution
- Schema Evolution
- Time Travel

Unified Data Access



Dremio Sonar

- High Performance Data Lakehouse Query Engine
- Data federation
- Unified Semantic Layer

Easy Lakehouse Management



Dremio Arctic

- Lakehouse Catalog
- Manage your data as code
- Multiple Domains

#5- Self-Service for Data Consumers

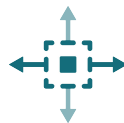
Data has become a critical asset to every company

Data is pervasive so it's no longer practical for one IT team to centrally manage a company's data



Discoverable

Data must be exposed through a catalog with rich metadata



Addressable

Data must be easily accessible to a variety of users and tools



Trustworthy and truthful

Data quality must be ensured before it is consumed



Self-describing

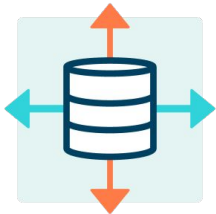
Schemas with clear semantics and syntax to enable self-service



Secure

Data must be secure and governed by global access control

Dremio Makes Self-Service Easy for Data Consumers



Unified Data Access

A single, unified access point for all enterprise data for BI and ad-hoc self-service.



Based on Apache Arrow

Deliver data faster from object storage to your favorite BI tools such as Power BI and Tableau.



Data Reflections

Get answers to your business questions with sub-second latency, without needing BI cubes, data copies, or complex materialized views.



Business Friendly Semantic Layer

Provide an easy, no/low code experience to interact with, analyze, and serve data.



Enable Data Mesh and Data Products

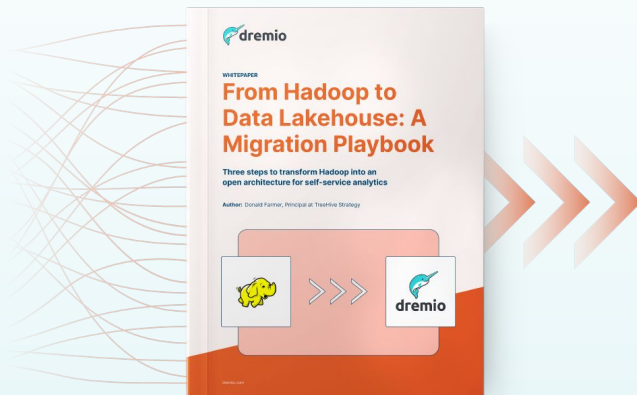
Quickly publish data assets and products into a catalog experience from data stored across the enterprise.



Open Data Lakehouse

With open source at our core, Dremio provides easy data lakehouse management for multiple domains and table formats like Apache Iceberg.

Data Lake Modernization with Dremio



Phase 01

Modernize Hadoop Query Engine & Provide Self-Service Analytics

Phase 02

Migrate HDFS to object storage

Phase 03

Create Your Open Data Lakehouse

GNARLY Data_Waves

PRESENTED BY  dremio

Thank
you!